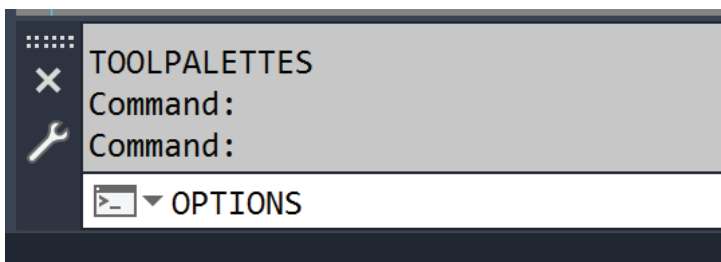
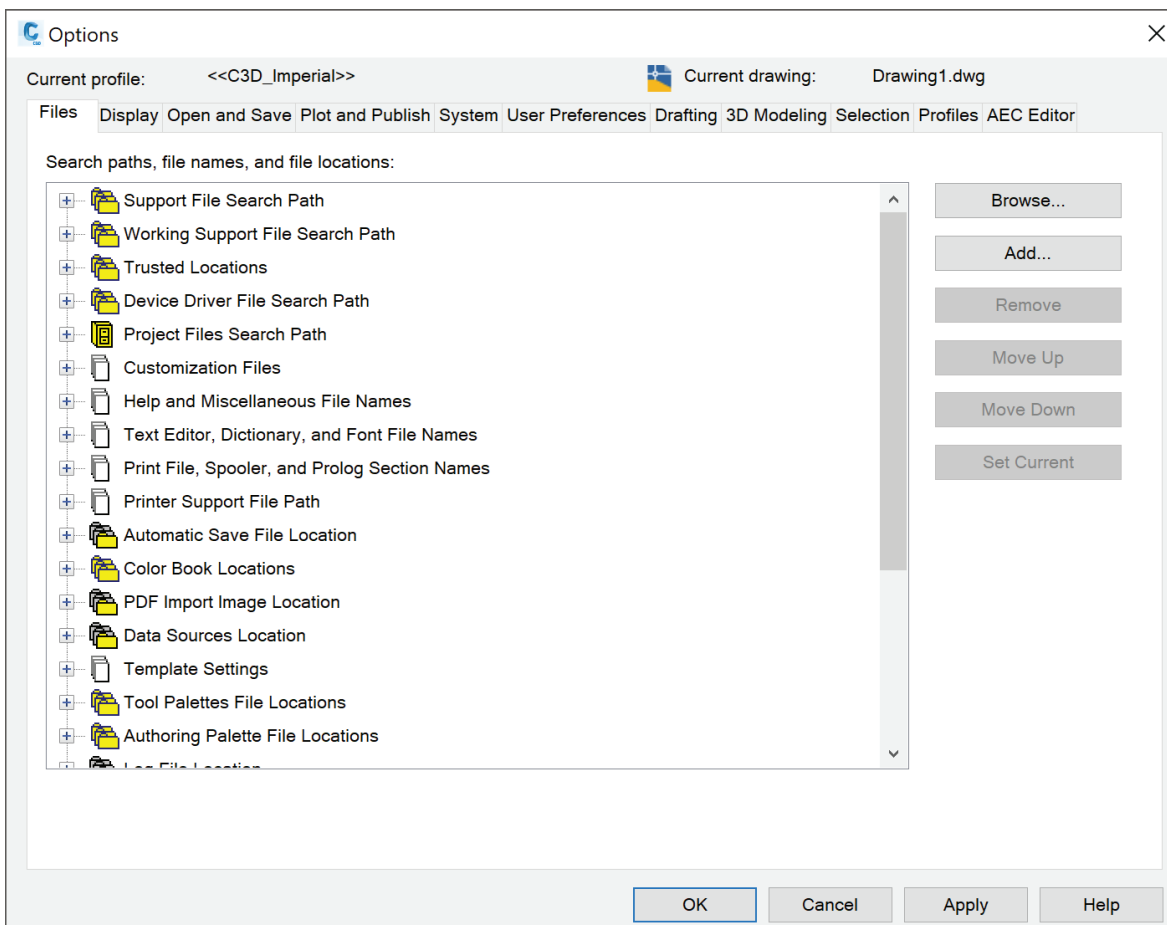


## Installing Belgard Hatch Patterns

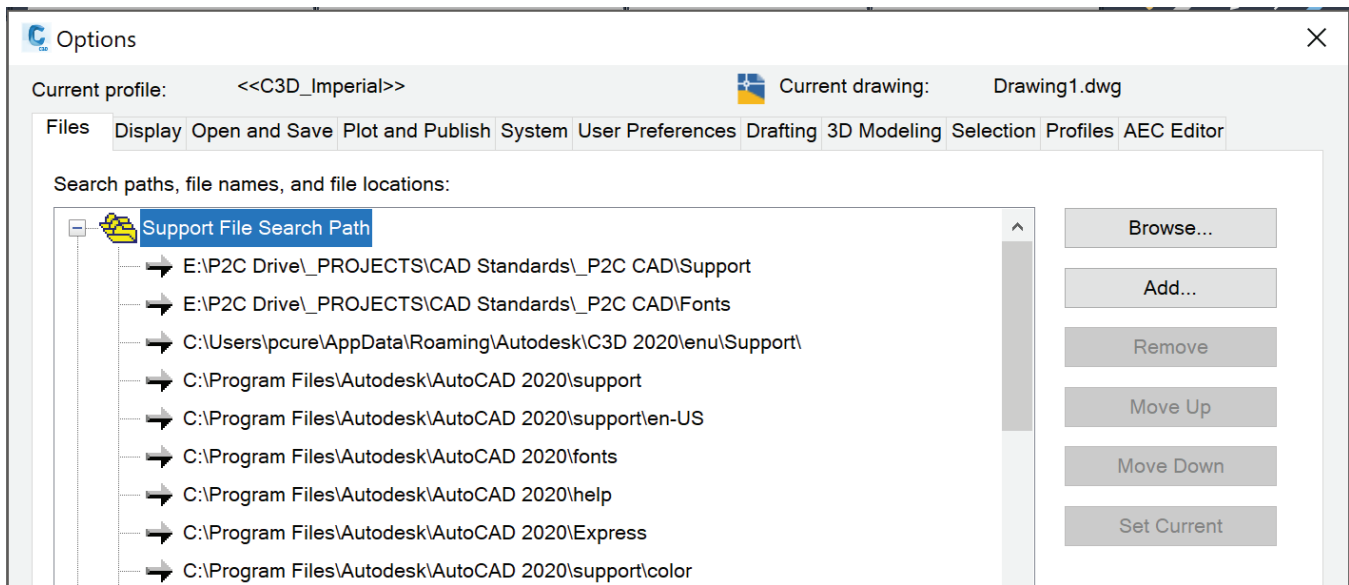
1. Create a "Belgard Hatch" folder in your desired location.
2. Download the desired Belgard hatch patterns from [www.belgardcommercial.com](http://www.belgardcommercial.com) and place them in the "Belgard Hatch" folder.
3. Open AutoCAD and type 'OPTIONS' in the command line:



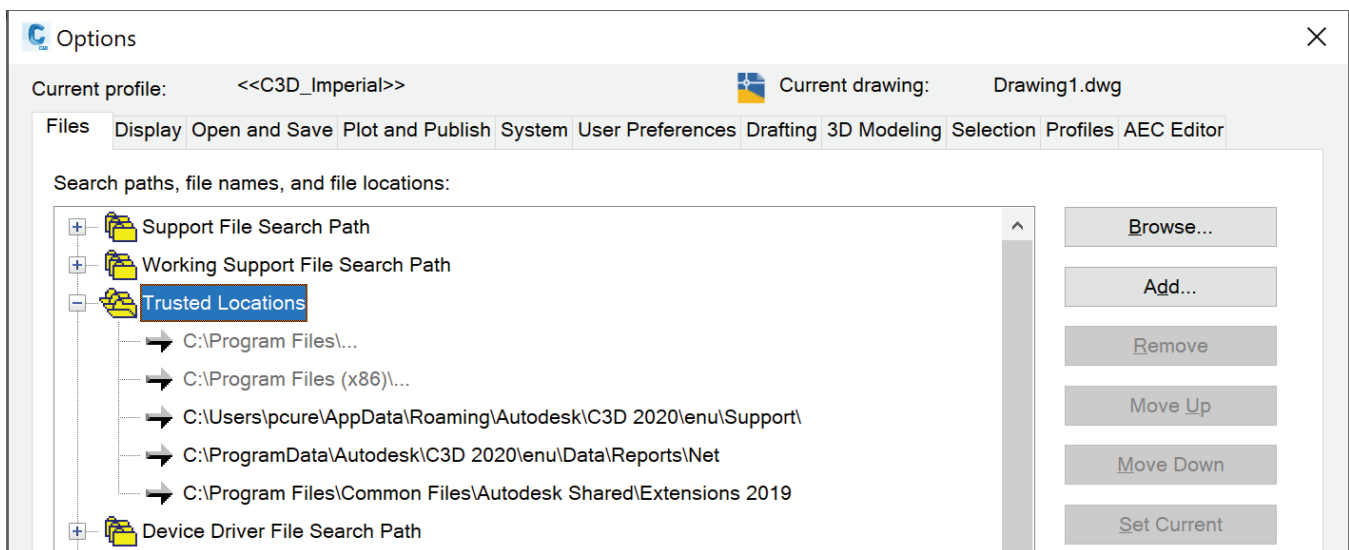
4. In the 'Options' dialogue box, select the files tab:



- Expand 'Support File Search Path' and click 'Add':



- Next click 'Browse' and use the browse dialog box to locate the 'Belgard Hatch' folder created in Step 1 and click 'Ok'.
- Collapse 'Support Files Search Path' and expand 'Trusted Locations', then click 'Add' and then 'Browse' and browse to your 'Belgard Hatch' folder location and click 'Ok'.



- Click the 'Apply' button at the bottom of the 'Options' dialog box and then click 'Ok'. Your Belgard hatch patterns are ready to use.

**Note:** For improved performance, only place the hatch pattern files you want to immediately use in the 'Belgard Hatch' folder. If you place all of them in there at once, the hatch function in AutoCAD can slow down significantly.