



## Aqualine™ 6" x 6"

Permeable Paver

Aqualine 6" x 6" is a square paver featuring not only the environmentally friendly benefits of a permeable paver, but also high visual appeal, low maintenance and proven durability. Aqualine's versatile pattern range allows for flexible design options.





## Benefits of Aqualine™ 6" x 6":

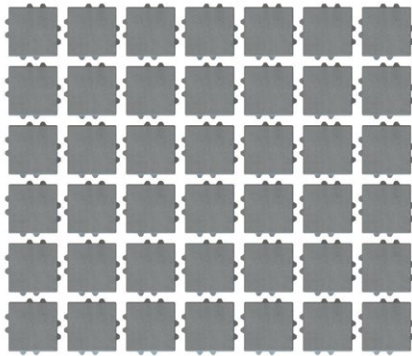
**Belgard's Aqualine permeable pavement systems can eliminate stormwater runoff and improve water quality**

- Interlocking spacer bars for increased structural performance
- Smooth surface texture with a micro-chamfer to minimize vibration and enhance wheelchair comfort
- Can be utilized to construct an ADA-compliant pavement
- True installed dimensions for design optimization
- Optimal joint openings for infiltration and maintenance
- Meet the requirements of ASTM C936

## Benefits by the numbers:

- Chamfer Width: 3 mm
- Spacer Bar Width: 10 mm
- Surface Infiltration Rate: > 500 inches per hour  
*(varies based on joint infill gradation)*
- Surface Open Area: 11%

## Pallet Layer:



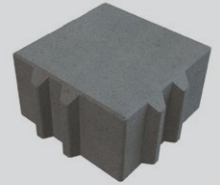
*Belgard permeable pavers can be used for a variety of different vehicular applications. Appropriate shape and thickness is based on project-specific conditions, including type of loading, base design, and subgrade conditions. It is recommended that you consult a Belgard Representative when specifying products for vehicular applications.*

### Approximate Dimensions

#### Paver

6" x 6"

Available Thickness:  
3 1/8" (80 mm)



Oldcastle® Architectural  
Three Glenlake Pkwy  
Atlanta, GA 30328  
877-235-4273

For more info visit: [Belgardcommercial.com](http://Belgardcommercial.com)

### Get Social

