



Aqualine™ 3" x 12"

Permeable Paver

Aqualine 3 x 12" is a linear paver featuring not only the environmentally friendly benefits of a permeable paver, but also high visual appeal, low maintenance, and proven durability. Aqualine's versatile pattern range allows for flexible design options.



Benefits of Aqualine™ 3" x 12":

Belgard's Aqualine permeable pavement systems can eliminate stormwater runoff and improve water quality

- Interlocking spacer bars for increased structural performance
- Smooth surface texture with a micro-chamfer to minimize vibration and enhance wheelchair comfort
- Can be utilized to construct an ADA-compliant pavement
- True installed dimensions for design optimization
- Optimal joint openings for infiltration and maintenance
- Meet the requirements of ASTM C936

Benefits by the numbers:

- Chamfer Width: 3 mm
- Spacer Bar Width: 10 mm
- Surface Infiltration Rate: > 500 inches per hour
(varies based on joint infill gradation)
- Surface Open Area: 14%

Pallet Layer:



Belgard permeable pavers can be used for a variety of different vehicular applications. Appropriate shape and thickness is based on project-specific conditions, including type of loading, base design, and subgrade conditions. It is recommended that you consult a Belgard Representative when specifying products for vehicular applications.

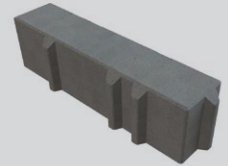
Approximate Dimensions

Paver

3" x 12"

Available Thickness:

3 1/8" (80 mm)



Oldcastle® Architectural
Three Glenlake Pkwy
Atlanta, GA 30328
877-235-4273

For more info visit: Belgardcommercial.com

Get Social

