



# Aqualine™ 12" x 12" L-Stone

## Permeable Pavers

Beauty, functionality and quality are hallmarks of the Belgard® Aqualine™ pavers series. The innovative design feature of the 12" x 12" L-Stone paver makes it the perfect permeable pavement choice for machine installed parking lots, alleys and light duty roads.



## Benefits of Aqualine™ 12" x 12" L-Stone:

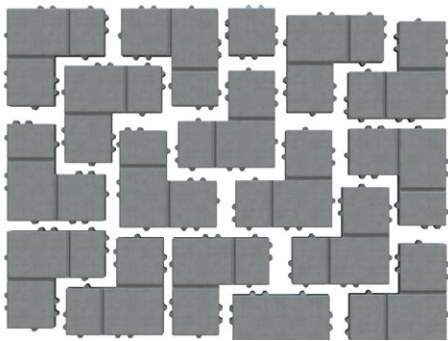
**Belgard's Aqualine permeable pavement systems can eliminate stormwater runoff and improve water quality**

- Interlocking spacer bars for increased structural performance
- Smooth surface texture with a micro-chamfer to minimize vibration and enhance wheelchair comfort
- Can be utilized to construct an ADA-compliant pavement
- True installed dimensions for design optimization
- Optimal joint openings for infiltration and maintenance
- Meet the requirements of ASTM C936
- False joints to provide a multi-size appearance
- Blind spacer bars
- L-shape is ideal for machine installation and to minimize cutting

## Benefits by the numbers:

- Chamfer Width: 3 mm
- Spacer Bar Width: 10 mm
- Surface Infiltration Rate: > 500 inches per hour  
*(varies based on joint infill gradation)*
- Surface Open Area: 8%

## Pallet Layer:



*Belgard permeable pavers can be used for a variety of different vehicular applications. Appropriate shape and thickness is based on project-specific conditions, including type of loading, base design, and subgrade conditions. It is recommended that you consult a Belgard Representative when specifying products for vehicular applications.*

## Aqualine™ 12" x 12" L-Stone

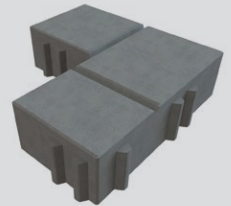
### Approximate Dimensions

#### L-Stone

12" x 12"

Available Thickness:

3<sup>1</sup>/<sub>8</sub>" (80 mm)



Oldcastle® Architectural  
Three Glenlake Pkwy  
Atlanta, GA 30328  
877-235-4273

For more info visit: [Belgardcommercial.com](http://Belgardcommercial.com)

### Get Social

