



Aqualine™ Ashlar 3-Piece Permeable Paver

Beauty, functionality and quality are hallmarks of the Belgard® Commercial Aqualine™ permeable pavers. The innovative design features of the permeable paver systems are hallmarks of the Aqualine Ashlar 3-Piece permeable paver. The innovative design features of this permeable paver system make a perfect pavement choice for machine or hand-installed driveways, plazas, parking lots and alleyways.



Benefits of Aqualine™ Ashlar 3-Piece:

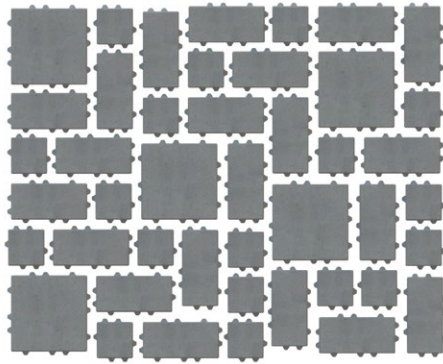
Belgard's Aqualine permeable pavement systems can eliminate stormwater runoff and improve water quality

- Interlocking spacer bars for increased structural performance
- Smooth surface texture with a micro-chamfer to minimize vibration and enhance wheelchair comfort
- Can be utilized to construct an ADA-compliant pavement
- True installed dimensions for design optimization
- Optimal joint openings for infiltration and maintenance
- Meet the requirements of ASTM C936

Benefits by the numbers:

- Chamfer Width: 3 mm
- Spacer Bar Width: 10 mm
- Surface Infiltration Rate: > 500 inches per hour
(varies based on joint infill gradation)
- Surface Open Area: 12%

Pallet Layer:



Belgard permeable pavers can be used for a variety of different vehicular applications. Appropriate shape and thickness is based on project-specific conditions, including type of loading, base design, and subgrade conditions. It is recommended that you consult a Belgard Representative when specifying products for vehicular applications.

Approximate Dimensions

Pavers

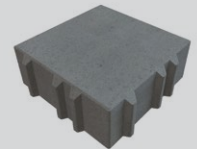
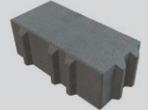
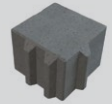
4½" x 4½"

4½" x 9"

9" x 9"

Available Thickness:

3⅛" (80 mm)



Oldcastle® Architectural
Three Glenlake Pkwy
Atlanta, GA 30328
877-235-4273

For more info visit: Belgardcommercial.com

Get Social

