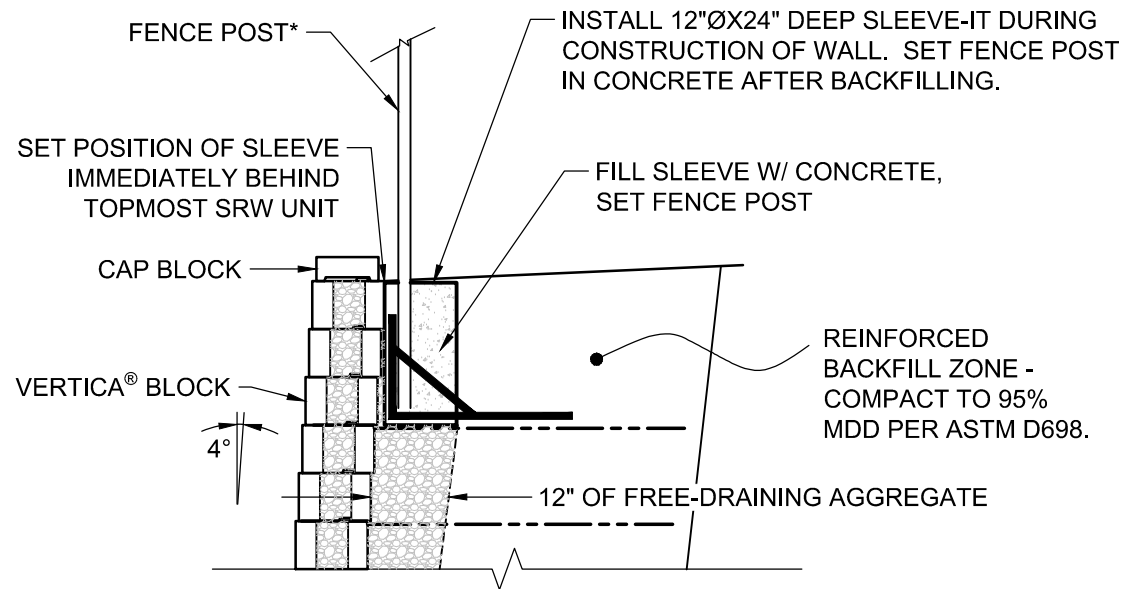


FOR MORE INFORMATION CONTACT: ADVANCED
 HARDSCAPE SOLUTIONS LLC
 1-866-843-0500 OR INFO@ADVANCEDHARDSCAPE.COM

- *FENCING SYSTEMS APPROVED FOR USE WITH SLEEVE-IT ARE LIMITED TO THE FOLLOWING HEIGHTS:
- A. CHAIN LINK UP TO 8 FEET ABOVE FINISHED GRADE WITH POST SPACING OF 8 FEET (MIN).
 - B. ORNAMENTAL (STEEL, ALUMINUM, WROUGHT IRON) POST UP TO 6 FEET ABOVE GRADE WITH POST SPACING OF 10 FEET (MIN).
 - C. OPEN BOARD / GAP BOARD (70% OPEN) POST UP TO 6 FEET ABOVE FINISHED GRADE WITH POST SPACING OF 6 FEET (MIN).



© 2015 Anchor Wall Engineering, LLC
 © and ™ Anchor Wall Systems, Inc.
 www.anchorwall.com

This drawing is for illustrative purposes only and should not be used for construction without the signature of a registered professional engineer.

Vertica Stone Cut® Virtual Joint Retaining Wall System

Fence Section with Sleeve-It

Scale:
 3/8" = 1'-0"

Drawn by:
 JB

Date:
 1/19/2016

Drawing number:
 VTVJ10