



# Tandem<sup>®</sup> Wall

## Retaining Wall System

Tandem<sup>®</sup> Wall retaining wall system designed by Belgard<sup>®</sup> provides the appearance of natural stone that will complement any hardscape. The innovative, versatile system can be used to create attractive, curved or straight retaining and freestanding walls. Great for use in a wide range of residential and light commercial hardscape projects.

## Benefits of Tandem® Wall:

- Classic look of natural stone, manufactured to consistent height tolerances to eliminate costly leveling time
- Build curved or straight walls and connect seamlessly to Tandem Column or Modular Grid structures
- Hollow filled design allows for easy and efficient addition of lighting and audio cables
- 24 different facial textures & three color blends allows for versatility and the ability to match or complement existing or new outdoor features and structures
- Engineered 90 degree corners create a clean look and eliminate timely cutting
- 6,000+ PSI compressive strength concrete
- Column kits available

## Benefits by the numbers:

- Gravity walls can be built up to 3 feet high, including buried course, but excluding the cap
- Walls can be built up to 8 feet high\* with structural backfill or no fines concrete, including buried course, but excluding the cap
- Minimum outside radius, measured on the top course to the front of the units: 6 feet
- Freestanding walls up to 28 inches

*\*This height assumes space between panels are filled with drainage aggregate, level backfill and clean, compacted sand or gravel and no surcharge.*



## Tandem® Wall

### Approximate Dimensions (HxLxD)\*\*

#### Blocks\*\*\*

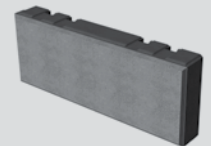
Ashlar Units:  
7" x 13 3/16" x 2 5/8"  
7" x 15 7/8" x 2 5/8"  
7" x 18 1/2" x 2 5/8"



Solid Units:  
7" x 13 3/16" x 2 5/8"  
7" x 15 7/8" x 2 5/8"  
7" x 18 1/2" x 2 5/8"

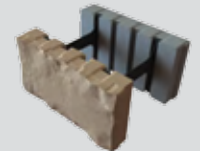


Smooth Units:  
7" x 13 3/16" x 2 5/8"  
7" x 15 7/8" x 2 5/8"  
7" x 18 1/2" x 2 5/8"



#### Connectors

6 7/8" x 7 7/8"



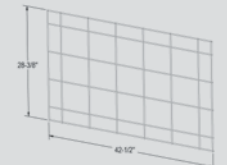
#### Cap

3 1/4" x 24" x 15"



#### Modular Grid

28 3/8" x 42 1/2"



#### Column Grid

42" x 21"



**\*\*Product dimensions are height by face length by depth. Actual dimensions may vary from these approximate values due to variations in manufacturing processes. Contact your Belgard representative for details.**

**\*\*\* Blocks with side texture for corners included in pallet. Face style may vary by location.**



**Oldcastle® Architectural**

900 Ashwood Parkway, Suite 600  
Atlanta, GA 30338

For more info visit: [Belgardcommercial.com](http://Belgardcommercial.com)

### Get Social

